



## Test Report

No. SHAHG1000284301

Date: 20 Jan 2010

Page 1 of 9

FROGWILL.COM SP.J

LENCEWICZA 3/34,01-493 WARSAW,POLAND

The following sample(s) was/were submitted and identified on behalf of the clients as : NAIL STICKERS

SGS Job No. : SHD002936117 - SH  
Buyer : FROGWILL.COM SP.J  
Country of Destination : POLAND  
Date of Sample Received : 13 Jan 2010  
Testing Period : 13 Jan 2010 - 15 Jan 2010  
Test Requested : Selected test(s) as requested by client.  
Test Method : Please refer to next page(s).  
Test Results : Please refer to next page(s).  
Conclusion : When tested as specified, the specified material of the submitted sample 1 complies with the stated requirements of the European Standard EN 71 Part3:1994 + A1:2000+ AC: 2002.

When tested as specified, the submitted samples comply with the phthalate requirement stated in Entry 51 & 52 of Regulation (EC) No 552/2009 amending Annex XVII of REACH Regulation (EC) No 1907/2006 (previously restricted under Directive 2005/84/EC).

When tested as specified, the submitted samples comply with the Cadmium Requirement of Entry 23 of Regulation (EC) No 552/2009 amending Annex XVII of REACH Regulation (EC) No 1907/2006 (previously restricted under Directive 91/338/EC).

Signed for and on behalf of  
SGS-CSTC Ltd.

Hao Jinyu, Sandy  
Lab Manager

This document is issued by the Company under its General Conditions of Service printed overleaf or available on request and accessible at [http://www.sgs.com/terms\\_and\\_conditions.htm](http://www.sgs.com/terms_and_conditions.htm). Attention is drawn to the limitation of liability, indemnification and jurisdiction issues defined therein. Any holder of this document is advised that information contained hereon reflects the Company's findings at the time of its intervention only and within the limits of Client's instructions, if any. The Company's sole responsibility is to its Client and this document does not exonerate parties to a transaction from exercising all their rights and obligations under the transaction documents. Any unauthorized alteration, forgery or falsification of the content or appearance of this document is unlawful and offenders may be prosecuted to the fullest extent of the law.  
Unless otherwise stated the results shown in this test report refer only to the sample(s) tested. This document cannot be reproduced except in full, without prior approval of the Company.



3rd Building, No. 889, Yishan Road, Shanghai, China

200233

T&E: (86-21) 61402553

F&E: (86-21) 64953679

www.cn.sgs.com

中国·上海·宜山路889号3号楼

邮编: 200233

HL: (86-21) 61402594

HL: (86-21) 54500353

e sgs.china@sgs.com



# Test Report

No. SHAHG1000284301

Date: 20 Jan 2010

Page 2 of 9

Test Results :

### Test Part Description :

Specimen No.	SGS Sample ID	Description
1	SHA10-002843.001	Blue flower with glitter
2	SHA10-002843.002	White plastic nail

Remarks :

- (1) 1 mg/kg = 1 ppm = 0.0001%
- (2) MDL = Method Detection Limit
- (3) ND = Not Detected ( < MDL )
- (4) "-" = Not Regulated

### EN 71 Part3:1994 (including amendment A1:2000/AC:2002) - Migration of Certain Elements

Test Method : With reference to EN 71 Part 3:1994 + A1:2000 + AC: 2002, analysis was performed by ICP-OES

Test Item(s)	Limit	Unit	MDL	001
Soluble Lead (Pb)	90	mg/kg	5	ND
Soluble Antimony (Sb)	60	mg/kg	5	ND
Soluble Arsenic (As)	25	mg/kg	5	ND
Soluble Barium (Ba)	1,000	mg/kg	10	ND
Soluble Cadmium (Cd)	75	mg/kg	5	ND
Soluble Chromium (Cr)	60	mg/kg	5	ND
Soluble Mercury (Hg)	60	mg/kg	6	ND
Soluble Selenium (Se)	500	mg/kg	10	ND

Notes :

- (1) Results shown are of the adjusted analytical results.
- (2) Mass of trace amount of sample 1 is 61.5mg.

### Entry 51 & 52 of Regulation (EC) No 552/2009 amending Annex XVII of REACH Regulation (EC) No 1907/2006 (previously restricted under Directive 2005/84/EC)

Test Method : With reference to ASTM D 3421-75, analysis was performed by GC/MS.

Test Item(s)	Limit	Unit	MDL	001	002
1. For all toys and childcare articles	-	-	-	-	-
Dibutyl Phthalate (DBP)	-	%	0.003	ND	ND
Benzylbutyl Phthalate (BBP)	-	%	0.003	ND	ND

This document is issued by the Company under its General Conditions of Service printed overleaf or available on request and accessible at [http://www.sgs.com/terms\\_and\\_conditions.htm](http://www.sgs.com/terms_and_conditions.htm). Attention is drawn to the limitation of liability, indemnification and jurisdiction issues defined therein. Any holder of this document is advised that information contained hereon reflects the Company's findings at the time of its intervention only and within the limits of Client's instructions, if any. The Company's sole responsibility is to its Client and this document does not exonerate parties to a transaction from exercising all their rights and obligations under the transaction documents. Any unauthorized alteration, forgery or falsification of the content or appearance of this document is unlawful and offenders may be prosecuted to the fullest extent of the law.

Unless otherwise stated the results shown in this test report refer only to the sample(s) tested. This document cannot be reproduced except in full, without prior approval of the Company.



3rd Building, No. 889, Yishan Road, Shanghai, China

200233

T&E:(86-21) 61402553

F&E:(86-21) 64953679

www.cn.sgs.com

中国·上海·宜山路889号3号楼

邮编: 200233

HL:(86-21) 61402594

HL:(86-21) 54500353

e sgs.china@sgs.com



# Test Report

No. SHAHG1000284301

Date: 20 Jan 2010

Page 3 of 9

<u>Test Item(s)</u>	<u>Limit</u>	<u>Unit</u>	<u>MDL</u>	<u>001</u>	<u>002</u>
Bis-(2-ethylhexyl) Phthalate (DEHP)	-	%	0.003	0.068	ND
Total (DBP+BBP+DEHP)	0.1	%	-	0.068	ND
2. For toys and childcare articles that can be	-	-	-	-	-
Diisononyl Phthalate (DINP)	-	%	0.010	ND	ND
Di-n-octyl Phthalate (DNOP)	-	%	0.003	ND	ND
Diisodecyl Phthalate (DIDP)	-	%	0.010	ND	ND
Total (DINP+DNOP+DIDP)	0.1	%	-	ND	ND

### Notes :

European Parliament adopted new phthalate Entry 51 & 52 of Regulation (EC) No 552/2009 amending Annex XVII of REACH Regulation (EC) No 1907/2006 (previously restricted under Directive 2005/84/EC);

(1-1) DBP, BBP and DEHP are totally banned for use in any toys on childcare articles where their concentration exceeds 0.1% by mass.

(1-2) DINP, DNOP, DIDP are totally banned for use in toys and childcare articles that can be mouthed where their concentration exceeds 0.1% by mass.

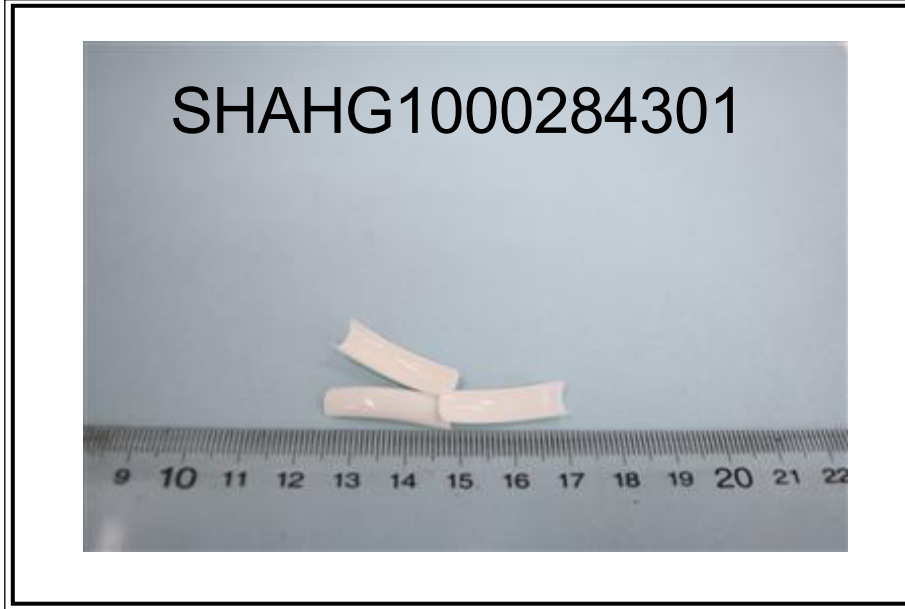
### Entry 23 of Regulation (EC) No 552/2009 amending Annex XVII of REACH Regulation (EC) No 1907/2006 (previously restricted under Directive 91/338/EC)

Test Method : With reference to EN 1122: 2001, Method B, analysis was performed by ICP-OES.

<u>Test Item(s)</u>	<u>Limit</u>	<u>Unit</u>	<u>MDL</u>	<u>001</u>	<u>002</u>
Cadmium (Cd)	100	mg/kg	2	ND	ND

This document is issued by the Company under its General Conditions of Service printed overleaf or available on request and accessible at [http://www.sgs.com/terms\\_and\\_conditions.htm](http://www.sgs.com/terms_and_conditions.htm). Attention is drawn to the limitation of liability, indemnification and jurisdiction issues defined therein. Any holder of this document is advised that information contained hereon reflects the Company's findings at the time of its intervention only and within the limits of Client's instructions, if any. The Company's sole responsibility is to its Client and this document does not exonerate parties to a transaction from exercising all their rights and obligations under the transaction documents. Any unauthorized alteration, forgery or falsification of the content or appearance of this document is unlawful and offenders may be prosecuted to the fullest extent of the law. Unless otherwise stated the results shown in this test report refer only to the sample(s) tested. This document cannot be reproduced except in full, without prior approval of the Company.

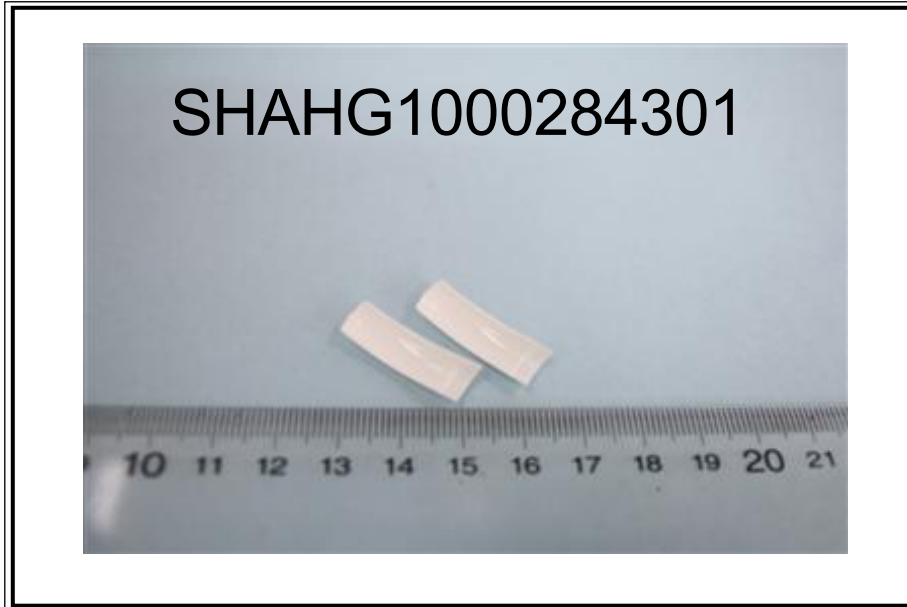
Sample photo:



This document is issued by the Company under its General Conditions of Service printed overleaf or available on request and accessible at [http://www.sgs.com/terms\\_and\\_conditions.htm](http://www.sgs.com/terms_and_conditions.htm). Attention is drawn to the limitation of liability, indemnification and jurisdiction issues defined therein. Any holder of this document is advised that information contained hereon reflects the Company's findings at the time of its intervention only and within the limits of Client's instructions, if any. The Company's sole responsibility is to its Client and this document does not exonerate parties to a transaction from exercising all their rights and obligations under the transaction documents. Any unauthorized alteration, forgery or falsification of the content or appearance of this document is unlawful and offenders may be prosecuted to the fullest extent of the law. Unless otherwise stated the results shown in this test report refer only to the sample(s) tested. This document cannot be reproduced except in full, without prior approval of the Company.

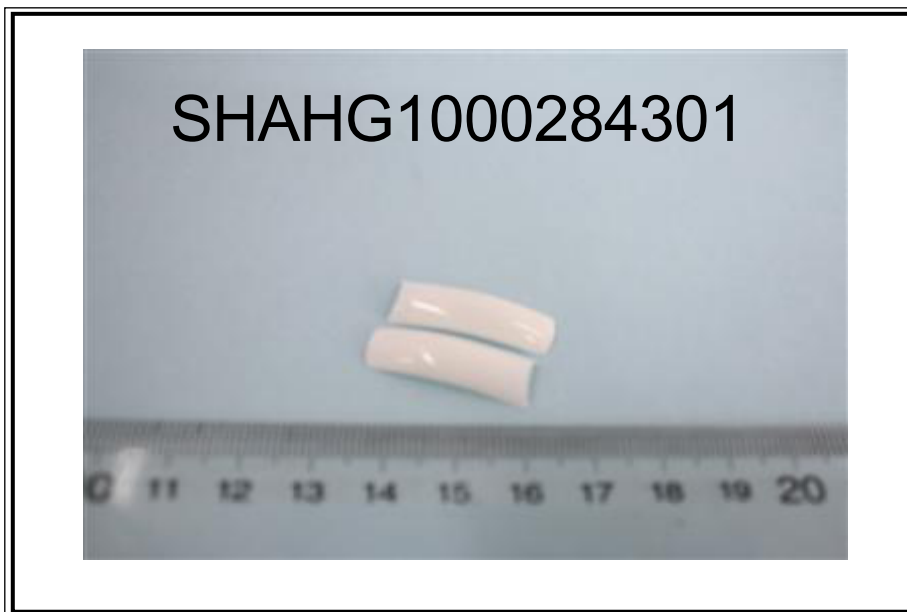
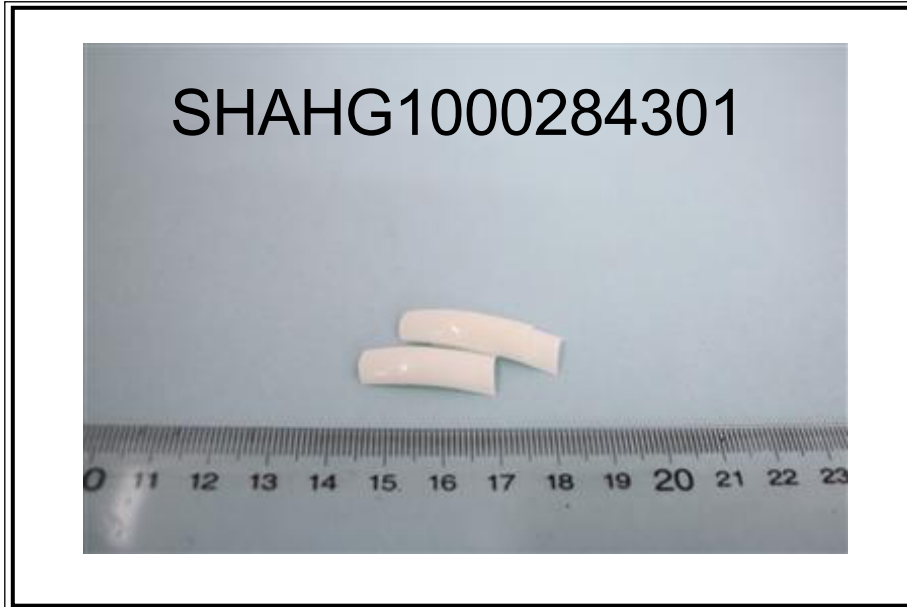


This document is issued by the Company under its General Conditions of Service printed overleaf or available on request and accessible at [http://www.sgs.com/terms\\_and\\_conditions.htm](http://www.sgs.com/terms_and_conditions.htm). Attention is drawn to the limitation of liability, indemnification and jurisdiction issues defined therein. Any holder of this document is advised that information contained hereon reflects the Company's findings at the time of its intervention only and within the limits of Client's instructions, if any. The Company's sole responsibility is to its Client and this document does not exonerate parties to a transaction from exercising all their rights and obligations under the transaction documents. Any unauthorized alteration, forgery or falsification of the content or appearance of this document is unlawful and offenders may be prosecuted to the fullest extent of the law. Unless otherwise stated the results shown in this test report refer only to the sample(s) tested. This document cannot be reproduced except in full, without prior approval of the Company.

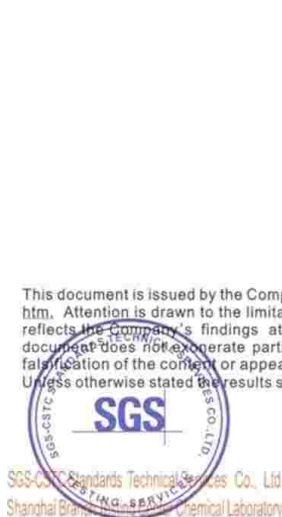


This document is issued by the Company under its General Conditions of Service printed overleaf or available on request and accessible at [http://www.sgs.com/terms\\_and\\_conditions.htm](http://www.sgs.com/terms_and_conditions.htm). Attention is drawn to the limitation of liability, indemnification and jurisdiction issues defined therein. Any holder of this document is advised that information contained hereon reflects the Company's findings at the time of its intervention only and within the limits of Client's instructions, if any. The Company's sole responsibility is to its Client and this document does not exonerate parties to a transaction from exercising all their rights and obligations under the transaction documents. Any unauthorized alteration, forgery or falsification of the content or appearance of this document is unlawful and offenders may be prosecuted to the fullest extent of the law.

Unless otherwise stated the results shown in this test report refer only to the sample(s) tested. This document cannot be reproduced except in full, without prior approval of the Company.



This document is issued by the Company under its General Conditions of Service printed overleaf or available on request and accessible at [http://www.sgs.com/terms\\_and\\_conditions.htm](http://www.sgs.com/terms_and_conditions.htm). Attention is drawn to the limitation of liability, indemnification and jurisdiction issues defined therein. Any holder of this document is advised that information contained hereon reflects the Company's findings at the time of its intervention only and within the limits of Client's instructions, if any. The Company's sole responsibility is to its Client and this document does not exonerate parties to a transaction from exercising all their rights and obligations under the transaction documents. Any unauthorized alteration, forgery or falsification of the content or appearance of this document is unlawful and offenders may be prosecuted to the fullest extent of the law. Unless otherwise stated the results shown in this test report refer only to the sample(s) tested. This document cannot be reproduced except in full, without prior approval of the Company.





This document is issued by the Company under its General Conditions of Service printed overleaf or available on request and accessible at [http://www.sgs.com/terms\\_and\\_conditions.htm](http://www.sgs.com/terms_and_conditions.htm). Attention is drawn to the limitation of liability, indemnification and jurisdiction issues defined therein. Any holder of this document is advised that information contained hereon reflects the Company's findings at the time of its intervention only and within the limits of Client's instructions, if any. The Company's sole responsibility is to its Client and this document does not exonerate parties to a transaction from exercising all their rights and obligations under the transaction documents. Any unauthorized alteration, forgery or falsification of the content or appearance of this document is unlawful and offenders may be prosecuted to the fullest extent of the law. Unless otherwise stated the results shown in this test report refer only to the sample(s) tested. This document cannot be reproduced except in full, without prior approval of the Company.





SGS authenticate the photo on original report only

\*\*\* End of Report \*\*\*

This document is issued by the Company under its General Conditions of Service printed overleaf or available on request and accessible at [http://www.sgs.com/terms\\_and\\_conditions.htm](http://www.sgs.com/terms_and_conditions.htm). Attention is drawn to the limitation of liability, indemnification and jurisdiction issues defined therein. Any holder of this document is advised that information contained hereon reflects the Company's findings at the time of its intervention only and within the limits of Client's instructions, if any. The Company's sole responsibility is to its Client and this document does not exonerate parties to a transaction from exercising all their rights and obligations under the transaction documents. Any unauthorized alteration, forgery or falsification of the content or appearance of this document is unlawful and offenders may be prosecuted to the fullest extent of the law. Unless otherwise stated the results shown in this test report refer only to the sample(s) tested. This document cannot be reproduced except in full, without prior approval of the Company.